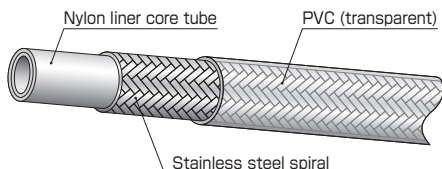


5501 Series of electrostatic-free type

5501

Features

- **Electrostatic free**
- **Excellent chemical durability**
- **Flexible and tough**
- **External-damage durability because of stainless wire braid in the reinforcement layer**



Part No.	Size			Max. working pressure		Min. burst pressure		Min. bending radius (mm)	Weight (g/m)	Coupling	
	Size No.	I.D. (in.)	I.D. (mm)	O.D. (mm)	(MPa)	(PSI)	(MPa)				(PSI)
5501-04-CL	04	1/4	6.0	10.6	21.0	3,000	70.0	10,200	50	110	Swage
5501-06-CL	06	3/8	9.0	14.8	21.0	3,000	70.0	10,200	80	220	

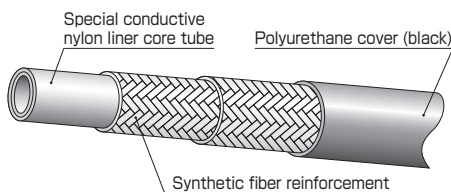
- Appropriate fluid : paint, thinner
 - Working temperature range : -10 to +60°C
 - Assembly of couplings with hose is to be done at our factory.
- 🔗 "-CL" stands for clear.

3450 Series of conductive polymer structure type

3450

Features

- **Wireless structure in conductive polymer layer**
- **Lightweight**
- **High chemical durability**



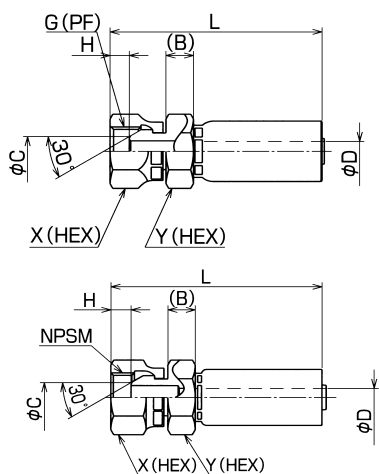
Part No.	Size			Max. working pressure		Min. burst pressure		Min. bending radius (mm)	Weight (g/m)	Coupling	
	Size No.	I.D. (in.)	I.D. (mm)	O.D. (mm)	(MPa)	(PSI)	(MPa)				(PSI)
★ 3450-03	03	3/16	4.8	10.8	23.0	3,350	92.0	13,400	25	71	Swage
★ 3450-04	04	1/4	6.3	13.2	23.0	3,350	92.0	13,400	25	95	
★ 3450-06	06	3/8	9.5	18.5	21.0	3,000	84.0	12,000	60	195	

- Appropriate fluid : paint, thinner
 - Working temperature range : -40 to +80°C
 - Assembly of couplings with hose is to be done at our factory.
- ★ Made-to-order

[Swage type]

(For 5501)

SF (for 5501)

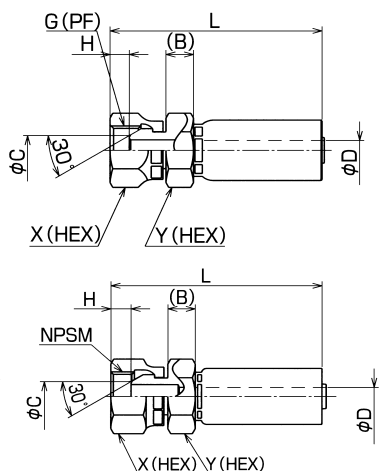


Part No.	Size No.	G or NPSM	B	C	Min. I.D. ϕ D	H	L	X (HEX)	Y (HEX)	Weight (g)
SF-PF-04-55	04	G 1/4	8.5	7.5	3.3	5.5	60	19	17	80
SF-NPSM-04-55	04	NPSM 1/4	8.5	7.5	3.3	5.5	60	19	17	80
SF-PF-06-5501	06	G 3/8	9.5	10.0	6.2	6.5	71	22	22	110
SF-NPSM-06-5501	06	NPSM 3/8	9.5	10.0	6.2	6.5	71	22	22	110

- Material : steel
- Adapter : 110, 145, 190, 130 *Not suitable for NPSM.
- Assembly of couplings with hose is to be done at our factory.

(For 3450)

SF (for 3450)



Part No.	Size No.	G or NPSM	B	C	Min. I.D. ϕ D	H	L	X (HEX)	Y (HEX)	Weight (g)
SF-PF-03	03	G 1/4	6.0	7.5	2.8	5.5	58	19	19	70
★ SF-NPSM-03-3450	03	NPSM 1/4	6.0	7.5	3.0	4.0	56	19	19	70
SF-PF-04	04	1/4	8.5	7.5	3.9	5.5	63	19	17	75
★ SF-NPSM-04	04	NPSM 1/4	8.5	7.5	4.0	5.5	63	19	19	80
SF-PF-06-N30	06	3/8	9.5	10.0	6.8	6.5	71	22	19	110

- Material : steel
- Adapter : 110, 145, 190, 130
- Assembly of couplings with hose is to be done at our factory.
- ★ Made-to-order