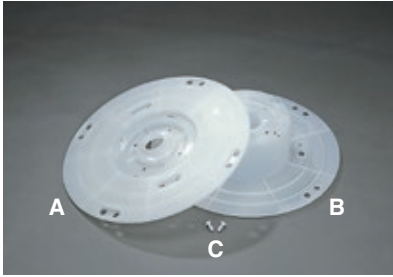


Instruction Manual for Tube Reel

1 Check of the type and sizes

Check the product number and applicable tubing sizes and confirm that you have all the necessary parts.



Specification of each part

Part	Name	Material	Color	Quantity
A	Reel plate	Polypropylene (P.P.)	White	1
B	Reel body	Polypropylene (P.P.)	White	1
C*	Reel fixing pin	Polycarbonate + Nylon	White	2

*Product number of reel fixing pin is PTR-P.

Combination

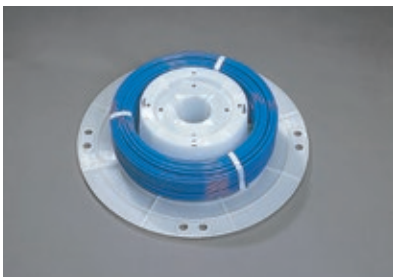
Product number	Combination
PTR-1	A+B+C
PTR-2	B+B+C

2 How to set PTR-1

For setting PTR-2, substitute "reel plate (A)" with "reel body (B)" in the following instructions and follow the same procedure.

2-1 Set the tubing

Place the reel body (B) as shown in the photograph, and a bundled tubing onto it. The tubing is bundled with tape. Place the tubing in such a direction so that the inside tubing end faces the clockwise direction.



(Note)

It is recommended to cut the bundle tape somewhere inside and tape it temporarily onto the side of the bundle before you put the tubing bundle onto the reel body.

2-2 Position adjustment of inside tubing end

Pull out the inside tubing end from the bundle tape and rotate the tubing bundle for the tubing end to reach a hook of the reel body (B).



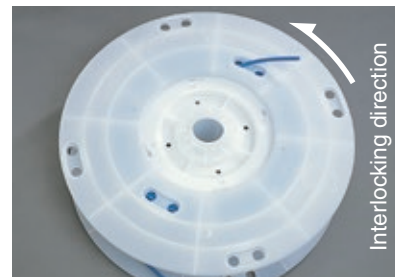
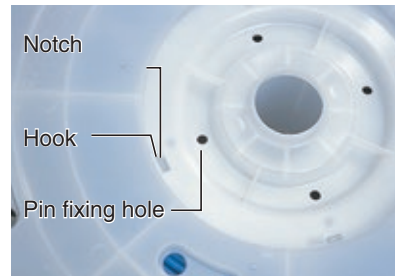
2-3 Fixing inside tubing end and setting reel plate

Cover the reel body with a reel plate (A) while inserting the position-adjusted tubing end into an inner-side hole (nearer one of two holes) of the reel plate.



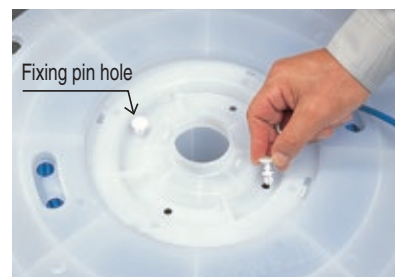
2-4 Fixing reel plate

Adjust the position of the reel plate (A) to match the positions of a notch of the reel plate (A) and the hook of the reel body (B). Rotate the reel plate (A) counterclockwise to interlock the notch and the hook. (Tip: Rotate the reel plate (A) pressing its center slightly.) Fit the positions of the fixing pin holes of the reel body (B) and the reel plate (A).



2-5 Insert fixing pins

Insert a reel fixing pin (C) into each of two fixing pin holes of the reel plate (A) to fix the plate with the reel body (B).



Tubing

Clean tubing

Processed tubing

PushOne fitting

QuickSeal fitting

Clean fitting/Chemifit

Bamboo-shoot fitting

Control switch/Detachable series

Jig/Tool/Accessory

Technical information

Reference

2-6 Setting inside tubing end

The inside tubing end coming out of the reel plate (A) should be re-inserted in the other hole of the reel plate (A) as in the photograph. Or rotate the tubing bundle by hand to an appropriate position.



2-7 Completing work

Insert the outside tubing end into the outer-side hole of the reel plate (A) and remove the bundle tape. The assembly of the tube reel is completed.

