

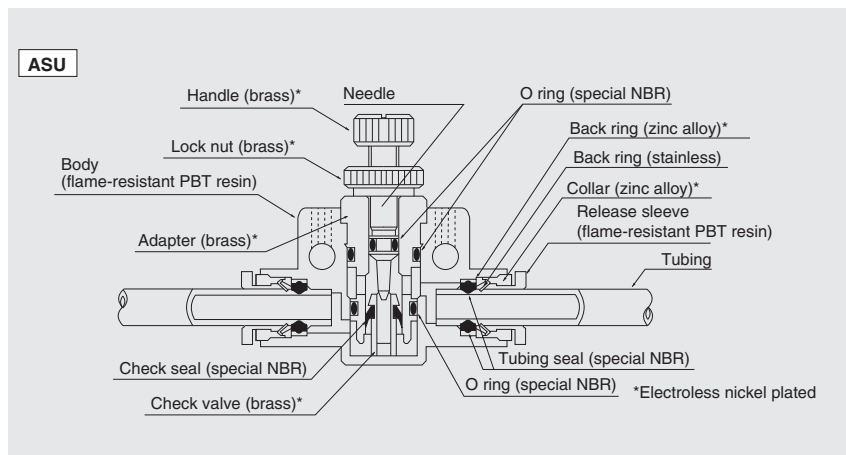
# Speed Controller

## PushOne™ Type

### Features

- PushOne connection of tubing  
Jig and tool not required for connecting the tubes.
- Centrally controllable on a pipe line  
Various kinds of piping are possible by fixing with connector pins and brackets.
- Electroless nickel plated  
Prevents degradation of surface and dissolution of copper ions into fluid.
- Flame-resistant resin (compliant with V-0 of UL94 standard)  
Made of flame-resistant resin PBT. High self-extinguishing performance is compliant with V-0 of UL94 standard. Usable under an environment with spatters.

### Cross-sectional structure diagram



### Applicable tubing



(\*1) Combinatory use of PL, PN, TA or TP tubing and Speed controller mixes general and clean type performances.  
When using them together in a clean environment, be aware of how this could lower the cleanliness level.

### Operating fluid, working temperature range

Operating fluid	Working temperature range
Air	+5°C~+60°C

### Pressure condition

Maximum working pressure: 1.0MPa

### Handling instructions

- ⚠ **Caution:** When the working conditions of tubes and fittings differ, use them under the lower specified conditions.
- ⚠ **Caution:** Tighten the lock nut and handle by hand, not by using a spanner.
- ⚠ **Caution:** The needle part stops when fully opened. Forced rotation could cause damage.
- ⚠ **Caution:** Cannot be used at a negative pressure.
- ⚠ **Caution:** Be sure to check the air flow direction when attaching a speed controller to equipment.
- ⚠ **Caution:** Do not bend the pipe sharply near the tubing insertion port (sleeve end) of the fitting. Keep the tubing straight for twice as long as the tubing diameter from the insertion port.
- ⚠ **Caution:** Cannot be used for sealing purposes.

☞ See page 134 for the common handling instructions for control, switch and detachable series products.

### Inline type connection



Controllers can be connected with a connector pin.

### Reference

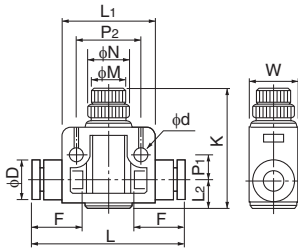
Flow characteristic graph.....P.167  
UL-94 standard flame test.....P.195

Inline type

●Millimeter size type

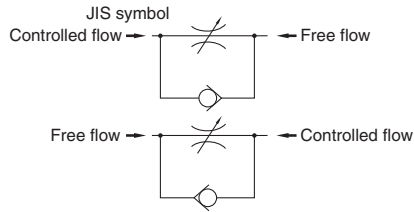


Product number	Applicable tubing outer diameter (mm)	L (mm)	L <sub>1</sub> (mm)	L <sub>2</sub> (mm)	P <sub>1</sub> (mm)	P <sub>2</sub> (mm)	K		F Tubing insertion length (mm)	N (mm)	M (mm)	D (mm)	d (mm)	W (mm)	Weight (g)
							Full open (mm)	Full closed (mm)							
ASU4	4	41.8	20.0	6.4	6.0	14.0	29.5	26.9	13.5	8.0	5.0	9.8	3.2	10.6	11.5
ASU6	6	47.6	28.0	9.0	8.2	20.0	43.5	39.8	15.0	11.0	8.0	12.6	4.2	15.0	31.0
ASU8	8	55.8	30.0	10.3	9.2	22.0	47.7	42.1	16.0	13.0	10.0	14.6	4.2	17.6	48.0



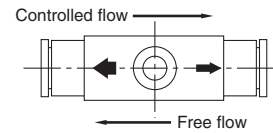
JIS symbol mark

JIS symbols are marked on both sides of the body.

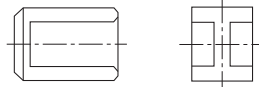


Control direction mark

Control directions are marked by arrows on the top of the body.



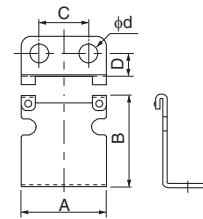
Connector pin



●Connector pin

Product number	Applicable fitting product number
HPN4	ASU4
HPN6	ASU6
	ASU8

Bracket



●Bracket

Product number	Applicable fitting product number	A (mm)	B (mm)	C (mm)	D (mm)	d (mm)
BRK4	ASU4	18.0	18.5	10.0	6.5	5.0
BRK6	ASU6	24.0	26.0	14.0	6.5	5.0
BRK8	ASU8	26.0	30.0	14.0	6.5	5.0

Tubing

Clean tubing

Processed tubing

PushOne fitting

QuickSeal fitting

Clean fitting/Chemifit

Bamboo-shoot fitting

Control switch/Detachable series

Jig/Tool/Accessory

Technical information

Reference